



**JOINT
LEARNING
NETWORK**
For Universal Health Coverage


**Thank you for joining and
welcome to today's
discussion!**

We will begin shortly.

Connect with us:

 jointlearningnetwork.org

 [@JLN4UHC](https://twitter.com/JLN4UHC)

 [@jointlearningnetwork](https://www.facebook.com/jointlearningnetwork)

Liberia's Experience with Ebola and Lessons Learned for COVID-19

Ernest Gonyon, MPH

Assistant Director for Health Financing

Human Resource Specialist & Resource Tracking Lead
COVID-19 Response

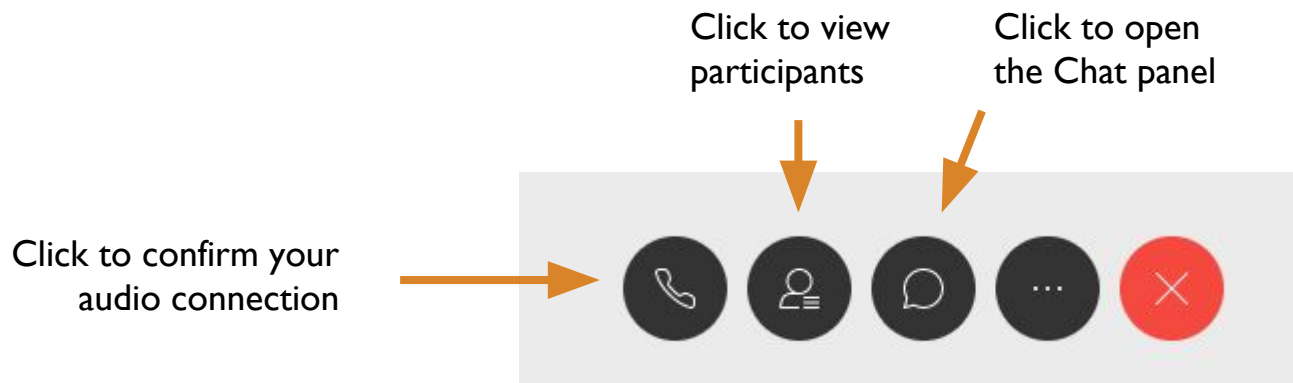
May 13, 2020

Agenda

- Introductions
- Welcome & Announcements
- Liberia's COVID-19 Response
 - Ernest Gonyon, MPH
- Discussion
- Closing

Welcome & Announcements

- Thank you for joining this discussion.
- Use the buttons at the bottom of your screen to interact during this session.
- Please use the **CHAT** function to introduce yourself to other participants and to share your questions or comments during today's discussion.



Welcome & Announcements

- Today's discussion is the third in a series:
 - China on April 23
 - South Korea on April 28
 - **Liberia today May 13**
- We encourage everyone to register on the JLN website for a virtual discussion following these sessions
- The JLN is actively adapting work in response to the COVID-19 pandemic, and we look forward to sharing more information soon

LIBERIA'S COVID-19 RESPONSE

APPLYING LESSONS LEARNED FROM EBOLA

Ernest Gonyon, MPH

Assistant Director for Health Financing

Human Resource Specialist & Resource Tracking Lead COVID-19 Response

1.

Country profile

2.

**Impact of EVD
outbreak**

3.

**Lessons learned
from Ebola**

4.

**Lessons applied to
COVID-19 response**

1.

Country profile

2.

**Impact of EVD
outbreak**

3.

**Lessons learned
from Ebola**

4.

**Lessons applied to
COVID-19 response**

Country profile: overview

- ▶ Population 4.8 million
- ▶ 15 countries
- ▶ 93 Health Districts
- ▶ 150 Administrative district
- ▶ 16 tribes in different regions

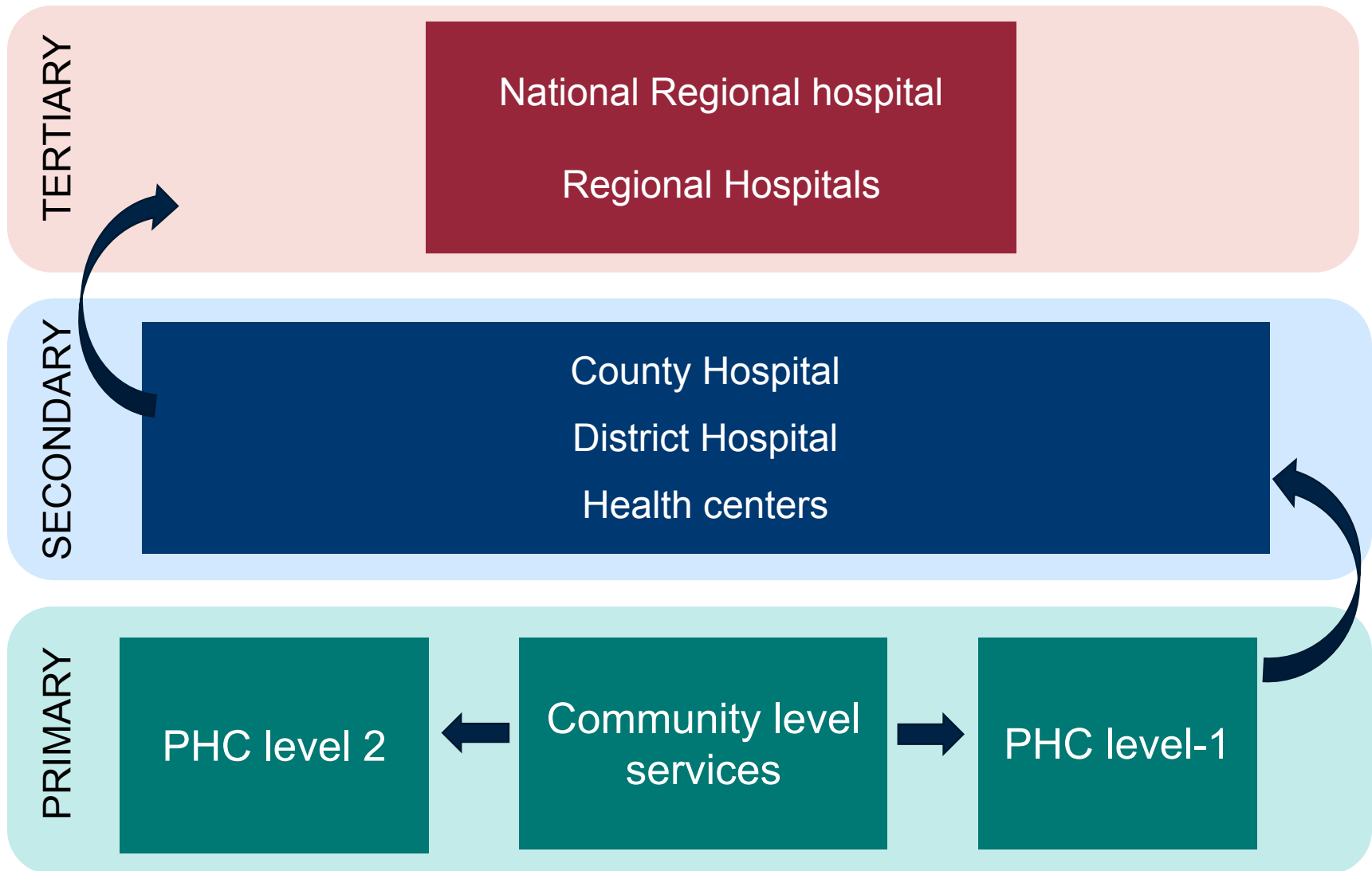


Country profile: Health status of population

Key Indicator	Value
Life expectancy (men)	61.6 years
Life expectancy (women)	66 years
Total fertility rate (births per woman)	4.7
Maternal mortality rate (per 100,000 live births)	1,072
Mortality rate of children <5 (per 1,000 live births)	94
Proportion of children <1 year old immunized against measles	65%
Skill birth attendant (per 10,000)	8.6
Access to health facility (physical)	71%
Health workers density	11.8

Source: Liberia Demographic Health Survey (2013), Liberia Health Assessment Report (2015), Liberia SARA Report (2018)

Organization of health services



1.

Country profile

2.

**Impact of EVD
outbreak**

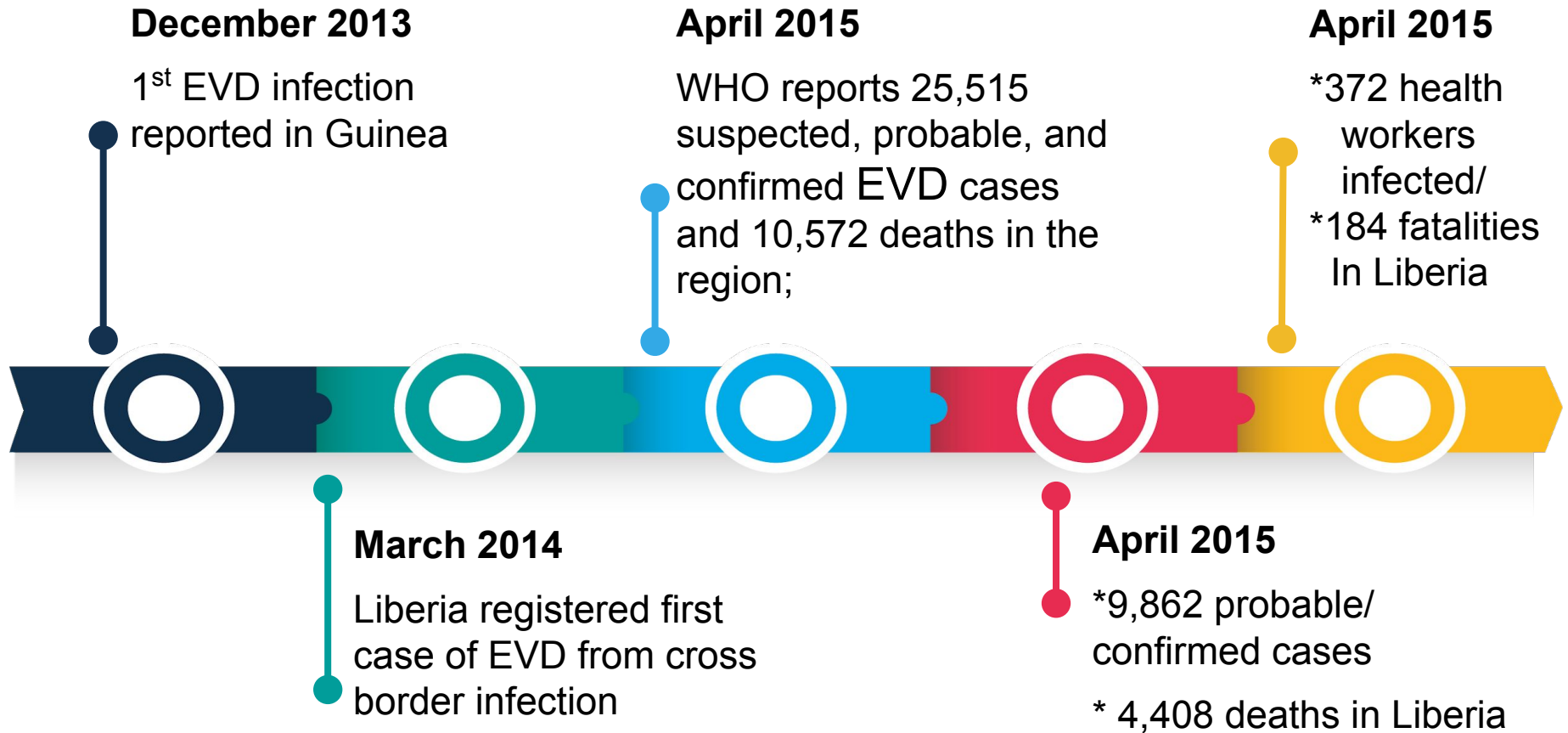
3.

**Lessons learned
from Ebola**

4.

**Lessons applied to
COVID-19 response**

Timeline of Ebola Viral Disease (EVD) outbreak



Impact of Ebola Viral Disease (EVD) outbreak

- ▶ Closure of health facilities due to fear, distrust and infection of health workers at some facilities
- ▶ Decline facility's utilization affecting key health indicators including RMNCAH service
- ▶ Disruption in delivery of routine health services
- ▶ Break down of national supply chain system

1.

Country profile

2.

**Impact of EVD
outbreak**

3.

**Lessons learned
from Ebola**

4.

**Lessons applied to
COVID-19 response**

Lessons learned from Ebola

Direct response to the outbreak

- Contact tracing ✓ It is critical to identify new infections rapidly
- Cross border coordination ✓ First EVD case in Liberia was cross-border infection
✓ Collaboration with neighbors
- Stakeholders /Partners coordination is key ✓ Oversight of external partners & resources can be challenging
- Protect and motivate Health Workers (HWs) ✓ HWs can be a source of infection for community and family members

Health infrastructure

- National supply chains ✓ PPE and other essential equipment cannot reach health workers without supply chains
- Surveillance systems & Laboratory capacity ✓ For timely detection of disease outbreaks, strong surveillance systems and lab capacity is vital

Lessons learned from Ebola

Political leadership and community engagement

- Political leadership
 - ✓ Political leadership was central to an effective Ebola response
 - ✓ President chaired multispectral EVD response committee
- Decentralization & community engagement
 - ✓ Local health structure were empowered to lead response at their levels
 - ✓ Local government official and communities leaders including head of religious communities should be empowered to support the response

1.

Country profile

2.

**Impact of EVD
outbreak**

3.

**Lessons learned
from Ebola**

4.

**Lessons applied
to COVID-19
response**

COVID-19 situation in Liberia

COVID-19 SITUATION

Total COVID-19 CASES
211

Active Case
106

Recovered
85

Death
20

Application of EVD lessons to COVID-19 response

Direct response to the outbreak

- Contact tracing:
 - ✓ Identify Precautionary Observation Centers (POCs) been paid for by IMS;
 - ✓ Trace, contact, and test: trace contacts, investigate cases, test, isolate, and treat;
 - ✓ Test dead bodies to establish contacts & isolate if the person died of COVID-19;
- Monitor Ports of Entry (PoE):
 - ✓ Heighten surveillance at all borders;
 - ✓ Feb. 2020, MOH & NPHIL deployed Port Health Officers to screen all port of entries;
- Coordinate and deploy additional resources
 - ✓ Resource mapping and expenditure tracking of COVID -19 resources;

Application of EVD lessons to COVID-19 response...

Health infrastructure

- National supply chains
 - ✓ Ensure active supply chain for COVID-19 response;
- Surveillance systems and laboratory capacity
 - ✓ Establishment of county surveillance & specimen transportation system;
 - ✓ Upgrade of National Reference Laboratory;
- Protect and motivate Health Workers (HWs)
 - ✓ Provide training and ensure PPE to all HWs;
 - ✓ Assign specific hospitals (6) to treat COVID-19 cases;
 - ✓ Restrict HWs for COVID-19 response to POEs, POCs, and treatment centers;
 - ✓ Curb COVID-19 transmission by distancing COVID-19 responders away from their families & loves ones;
 - ✓ Motivate HWs for COVID-19 response by providing incentives and hazard benefits;

Application of EVD lessons to COVID-19 response...

Political and community response

○ Political leadership

- ✓ Establishment of Special Presidential Advisory Committee on Coronavirus (SPACOC);
- ✓ President of Liberia chairs SPACO

○ Country approach

- ✓ Development of an emergency response plan;
- ✓ Organization of COVID-19 EOC and Resource Management System;
- ✓ Establishment of an Incident Management System;
- ✓ Appoint a National Response Coordinator and National Compliance Manager;

○ Community trust

- ✓ Community mobilization, involvement of private sector and NGOs as part of COVID response;

Thank you

Q&A and Discussion

Closing

- Thank you for participating in this discussion
- We will share a recording of this session
- Continue the discussion on the discussion forums on the JLN website
- Visit www.jointlearningnetwork.org/register to create an account



JOINT LEARNING NETWORK

For Universal Health Coverage

Thank You!

Stay Connected



jointlearningnetwork.org



[@JLN4UHC](https://twitter.com/JLN4UHC)



[@jointlearningnetwork](https://www.facebook.com/jointlearningnetwork)