

Thank you for joining and welcome to today's discussion!

We will begin shortly.

Connect with us:



jointlearningnetwork.org



[@JLN4UHC](https://twitter.com/JLN4UHC)



[@jointlearningnetwork](https://www.facebook.com/jointlearningnetwork)



JOINT
LEARNING
NETWORK
For Universal Health Coverage



JLN Network for Open Dialogue & Exchange

Get to Know the **NODE**

Introducing the JLN's COVID-19 Network for Open Dialogue and Exchange (NODE)

Welcome

- Thank you for joining this discussion.
- Use the buttons at the bottom of your screen to interact during this session.
- Please use the **CHAT** function to share your questions and comments during today's discussion.
 - Test the chat now. Introduce yourself & tell us where you are joining from.

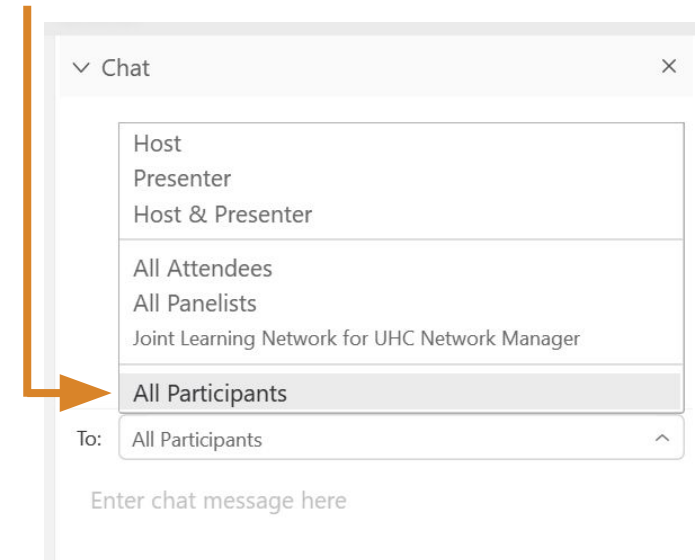
Click to confirm your audio connection

Click to view participants

Click to open the Chat panel



Set your chat to “All Participants” to share with everyone else in attendance



Session Overview and Agenda

- Opening
- Welcome remarks
 - Liz Clyma - Bill & Melinda Gates Foundation
 - Feng Zhao -- World Bank Group
- Moderated discussion: the role of joint learning in meeting COVID-19 challenges
 - Host: Adolfo Martinez Valle
 - Gitchi Diaz, PhilHealth
 - Dr. Lydia Dsane-Selby, Ghana NHIA
- Introducing the JLN COVID-19 Network for Open Dialogue and Exchange (NODE)
- Questions & answers
- Closing

Speakers



Adolfo
Martinez Valle



Gitchi Diaz



Lydia
Dsane-Selby



Liz Clyma



Feng Zhao



Sofi Bergkvist



Kamiar Khajavi

Welcome Remarks



Liz Clyma
Health Systems Director
Bill & Melinda Gates
Foundation



Feng Zhao
Practice Manager
Health, Nutrition & Population
World Bank Group

Moderated Discussion



Adolfo Martinez
Valle



Gitchi Diaz



Lydia Dsane-Selby



JLN Network for Open Dialogue & Exchange

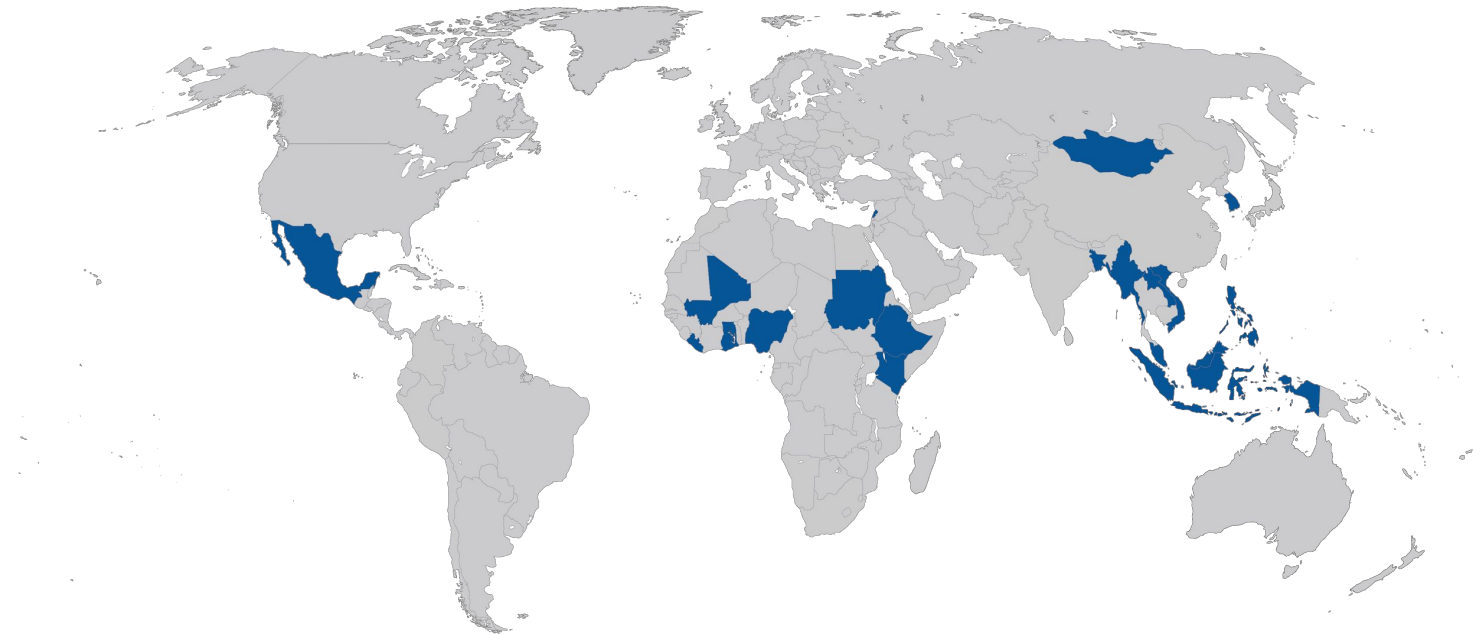
The COVID-19 Network for Open Dialogue and Exchange

Kamiar Khajavi

Executive Director,
Joint Learning Network for
Universal Health Coverage

Introduction and overview

- The Network Manager surveyed Country Core Groups (CCG) about member country needs during the COVID-19 pandemic
- **18 of 23 CCGs responded** (highlighted below)
- The survey provided important information on country priorities through COVID
- Findings later validated through exchanges with our SG and through expert interviews

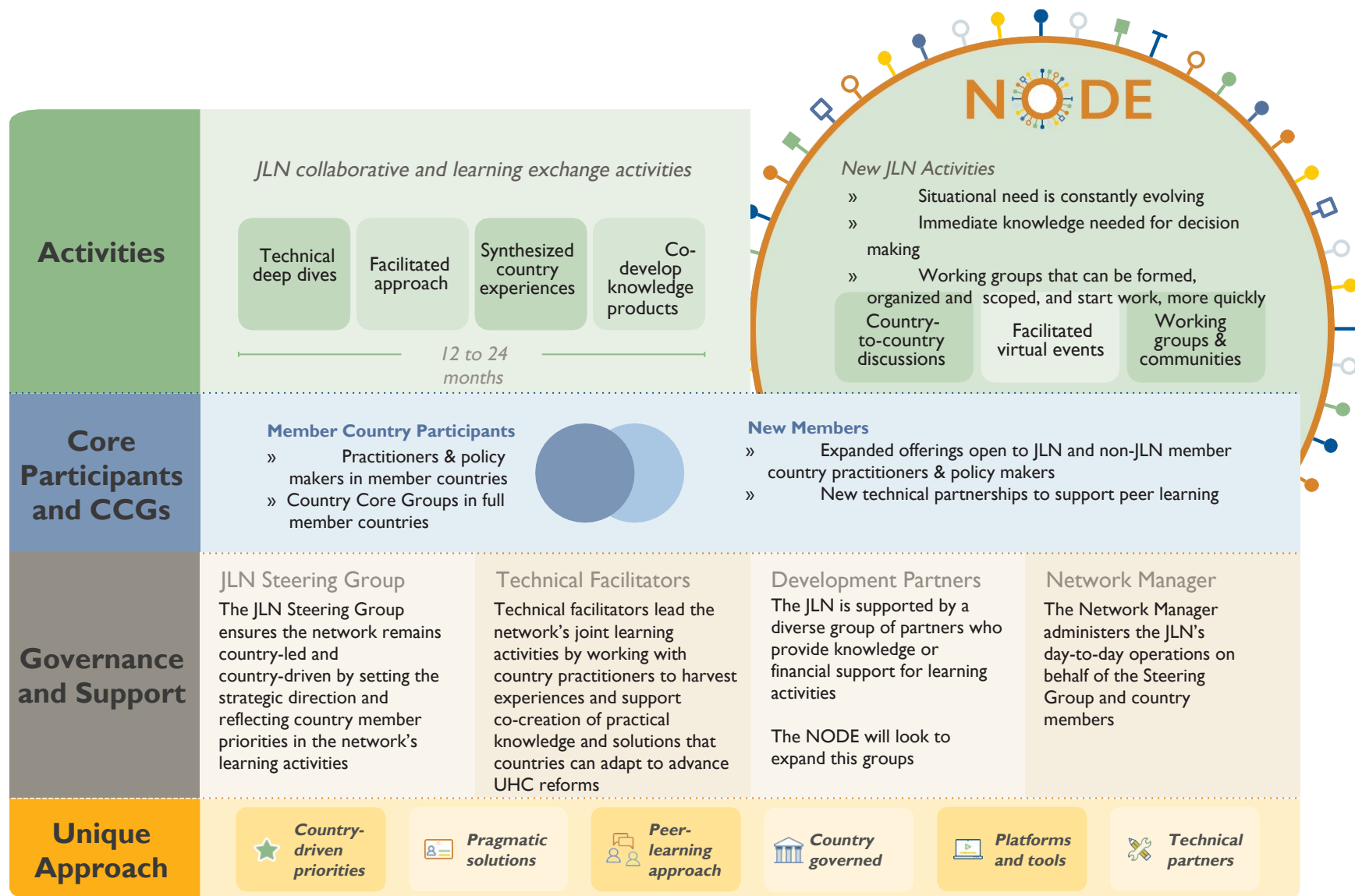


Main findings and our conclusions

- Respondents remain engaged in the pre-COVID JLN technical agenda
- Significant interest in additional pandemic-related topics
 - **84% said pandemic response topics are a high priority**
 - **79% said maintenance of essential services topics are a high priority**
- What we concluded was that for the JLN to be responsive to country needs, it must:
 - Introduce a new set of topics
 - Match the fast-evolving pandemic with more immediate offerings
 - Create a common platform where JLN members can easily access that information
 - Use a range of virtual tools for varying connectivity
 - Obtain routine feedback to identify and scope new work based on relevance to countries

The JLN NODE has been created to respond to these needs

So what is the NODE?

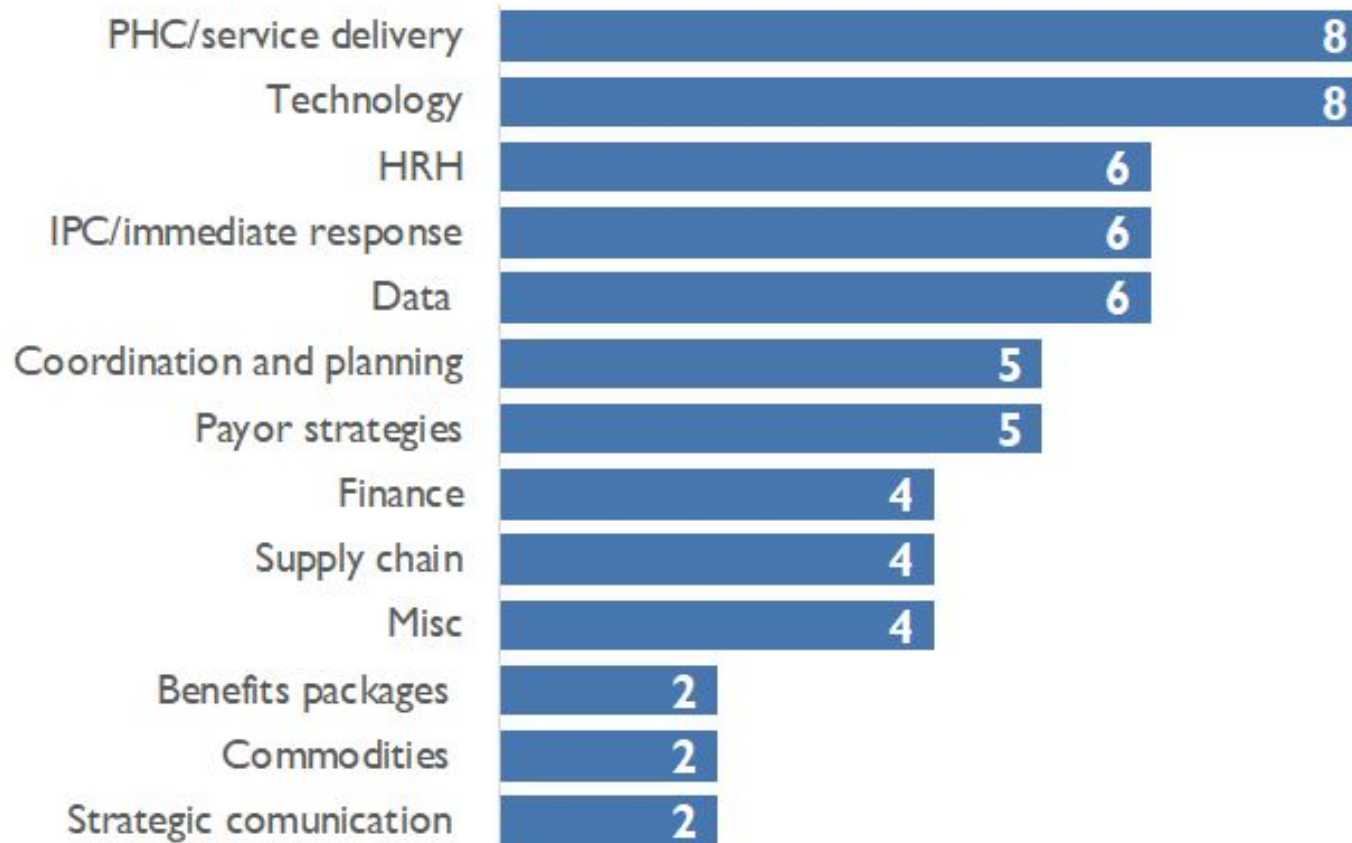


How is the NODE different from other JLN activity?

- **Effective virtual engagement tools and approaches**
 - More virtual learning -- we will make this interesting, we promise
 - Member engagement in discussion groups, online forums, etc.
- **We envision a “portfolio” of activities in the NODE**
 - Mix of activities from spontaneous, online member interactions -- to shorter, lightly facilitated working groups -- to activities that look more like collaboratives
 - This approach will allow us to cover topics more comprehensively
- **Rapid feedback, pulse surveys, etc.**
 - Issues and learning about the SARS-CoV-2 are moving quickly and so must we
 - We will check with you regularly about topics and priorities as these may shift
 - We need you to engage with us to make this a success
- **Broader participation**
 - The NODE's opportunities for joint learning will be inclusive and non-JLN member countries - mainly LMICs- will be welcome to connect, share, and learn
- **New and deepened partnerships**
 - The NODE will expand partnerships to best serve and meet countries' joint learning needs
 - For example, new work planned will be done jointly with the PHCPI, USAID, the Bank's COVID health finance response, others

The CCG survey provided additional insights into demand for topics

Frequency with which topics were mentioned



We are translating this into a broader JLN Technical Agenda

Green border =
some COVID
adaptation



Get involved in upcoming activities



Register an account on the JLN website

Open
June 4-12

Maintaining Essential Services at the Primary Care Level during the Pandemic

Open
June 4-17

Understanding and Utilizing Data to Inform COVID-19 Response and Recovery



Find Open Opportunities & Apply

Open
June 4-24

Ensuring PHC Serves as a Cornerstone for Health System Future Planning



JOINT
LEARNING
NETWORK
For Universal Health Coverage



JLN Network for Open Dialogue & Exchange

Questions & Answers

Please submit any questions, comments, and reactions you have into the Webex Chat.

We will answer as many as possible in the remaining time.



JOINT
LEARNING
NETWORK
For Universal Health Coverage



JLN Network for Open Dialogue & Exchange

Thank you!

Register at www.jointlearningnetwork.org/register to access the latest information, connect with other users, and join the NODE.